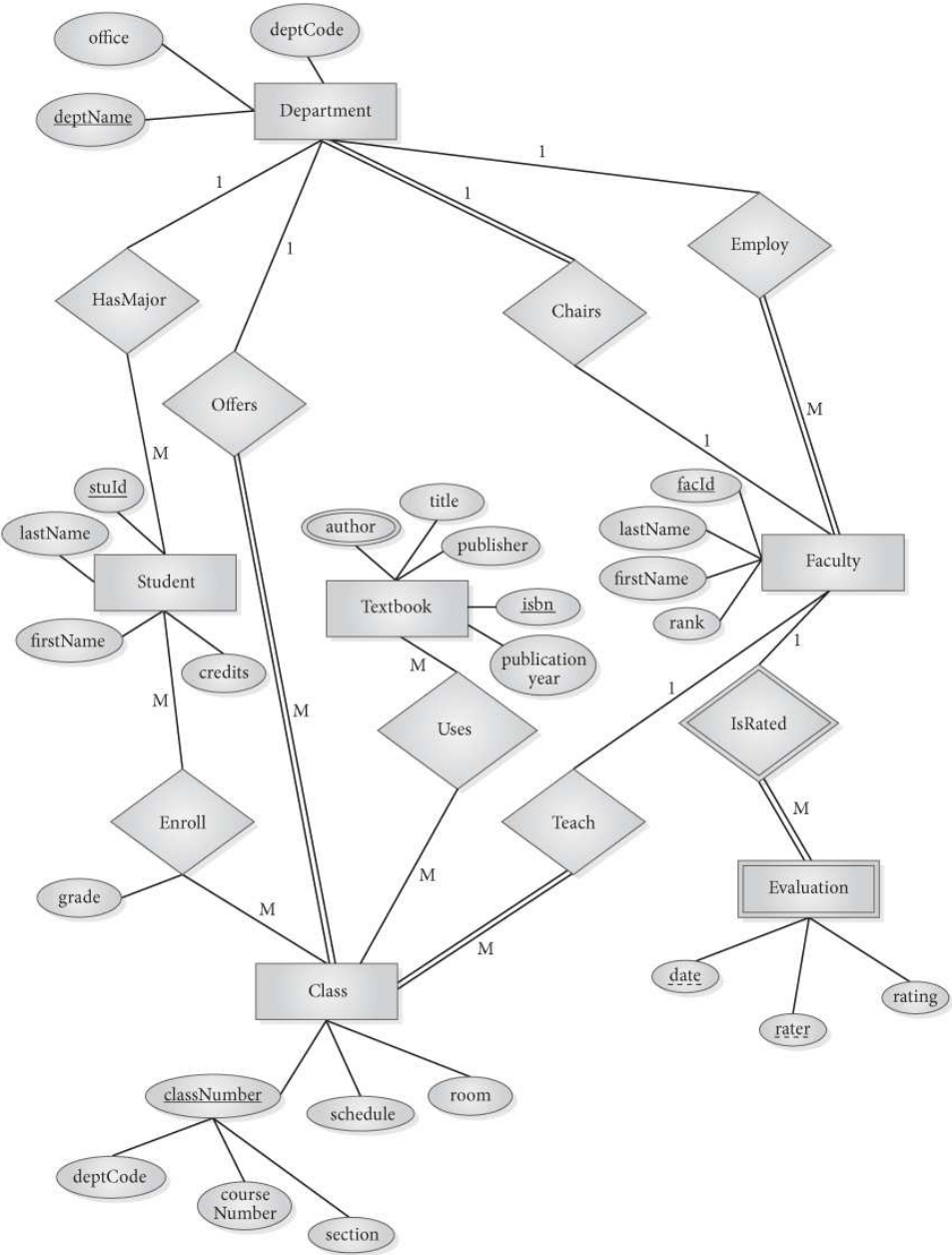


Cardinality Label Differences Between E-R and EE-R Diagrams

Tom Kelliher, CS 417

In E-R diagrams, the cardinality to use for an entity is on the “far” side of the relationship. Example: a Faculty member teaches many classes, and a Class is taught by one faculty member.



In EE-R diagrams, the cardinality to use for an entity is on the “near” side of the relationship. Example: a Faculty member teaches between zero and five classes, and a Class is taught by one faculty member.

