

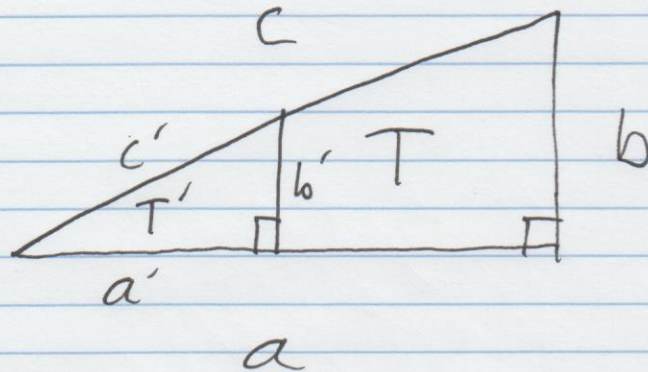
CS 480

10/13

(1)

Projection

Similar Triangles (problems 2 and 3)



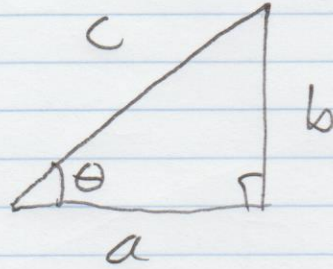
The ratio of any two sides of T equals the ratio of the corresponding two sides of T' .

For example:
$$\frac{b}{a} = \frac{b'}{a'}$$

If you know any three, you can solve for the fourth.

2

Tangent (Problem 4)



$$\tan \theta = \frac{b}{a}$$

$$\therefore \theta = \tan^{-1} \left(\frac{b}{a} \right)$$